

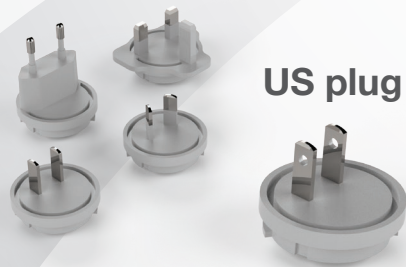
iAdaptAir™ Quick Start Guide

- 1 Attach the base** using the included screws. Base included for Medium & Large models.

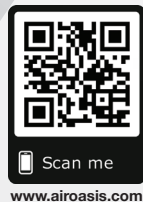


ATTENTION: Unit will not power up if the filter cartridge is not fully inserted.

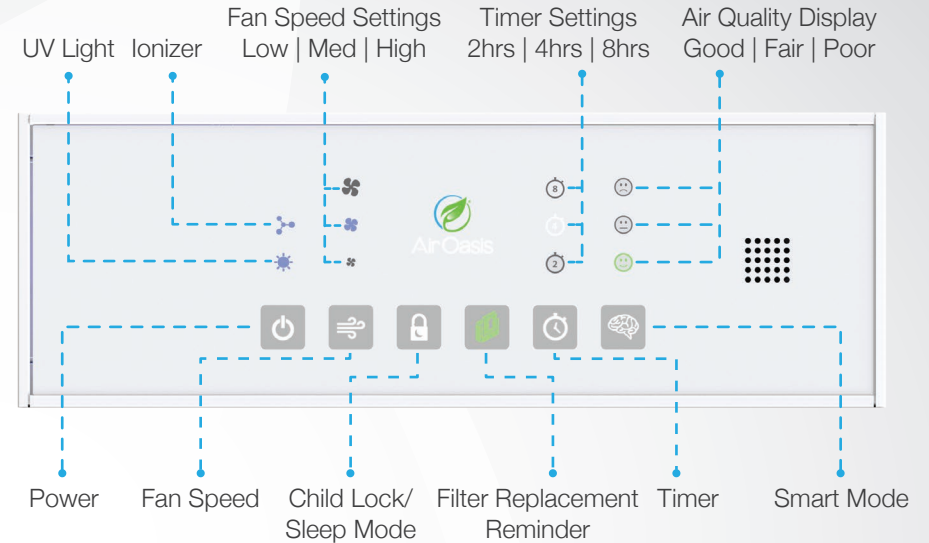
- 2 Plug in your iAdaptAir™.**



US plug



- 3 Press the power button.**



- 4 Connecting to WiFi (This step is optional)**

1. Verify that your smart phone is connected to WiFi.

2. Download the Air Oasis app.



App Store
<https://itunes.apple.com/us/app/air-oasis/id1331579715?mt=8>



Google Play
https://play.google.com/store/apps/details?id=com.airoasis.android&hl=en_US

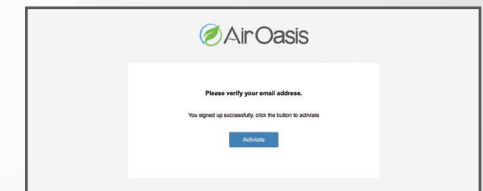


3. Create an account or go to **Try without creating account.**



To Create an account enter your email and create password.

4. After your account has been created, you will receive an email. Press the "Activate" button to activate your account.



5. Add a new place and device



Scan QR Code for your device

